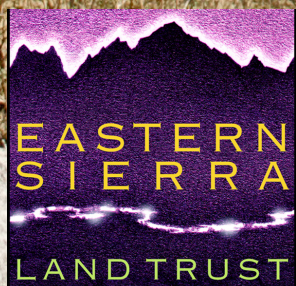


land

for tomorrow.



annual report 2013

new faces. same mission.

People, projects, and progress! Those are the words that describe 2013 at Eastern Sierra Land Trust.

Certainly the most significant event involving people was the retirement of Executive Director Karen



Karen Ferrell-Ingram

Ferrell-Ingram. One of ESLT's founding board members, Karen wore many hats over our 12-year history and is responsible for much of the success and growth of our work. Facing the daunting challenge of replacing Karen, we successfully completed a six-month search in May by hiring Kay Ogden as our fourth Executive Director.

Kay came to us from the Sierra Nevada Alliance in South Lake Tahoe, where she served as Associate Director. In her first eight months at ESLT, Kay has proven to be the perfect choice to lead us in the coming years.

Additional new faces in 2013 include:



Kay Ogden & Rush

- New board member Randy Keller; Randy recently retired as Inyo County Counsel and has been a longtime supporter and volunteer for ESLT
- Marguerite Burkham, our bright new Membership and Communications Coordinator
- Rand Wentworth, President of the national Land Trust Alliance, as our featured guest and speaker at our annual Lands & Legacy celebration in August

In our 5th and 6th years of participation in the Sierra Nevada AmeriCorps program, Elise Robinette accomplished an astounding amount of work during a short six-month service term. A generous grant from Metabolic Studio allowed us to secure two AmeriCorps members for full-year terms. Alison Amberg and Sara Kokkelenberg will be with us through October 2014, and have begun work on an exciting Eastside Pollinator Garden Project.

And speaking of people, we welcomed 100 new financially-supportive members to ESLT!

Successful land protection work is our primary product and great progress was achieved in 2013:

- We received a donation of the scenic and historic Green Creek Powerhouse Preserve near Conway Summit from the Sinai Foundation.
- With generous financial support from the Sierra Nevada Conservancy, we are now close to securing

permanent protection of the historic Sinnamon Meadows south of Bridgeport.

- Working closely with Mono County leaders and interested citizens, we made great progress toward permanent preservation of the Conway Ranch just north of Mono Lake.

And finally, through numerous events here in the Eastern Sierra and in Southern California, many of you joined us to celebrate our successful work and partnerships with landowners.

At these events our new video presentation "Valleys and Vistas: Preserving the Wild Side of California," helped to tell the story of our work as we protect important lands here in the Eastern Sierra.



With thanks,

Tony Taylor, President

board of directors

- Tony Taylor, *President*
 Sid Tyler, *Vice President*
 Bob Gardner, *Treasurer*
 Marie Patrick, *Secretary*
 Will Richmond, *Secretary*
- Randy Keller
 Bill Bramlette
- Heather deBethizy
 Jan Hunewill

advisors

- Dave Doonan
 Stephen Ingram
 Steve Frisch
 Nate Greenberg
 Rusty Gregory
 Linda Hess
 Sandy Hogan
 Byng Hunt
 Dr. Rick Kattelmann
 Ruth MacFarlane
 Geoff McQuilkin
- George Milovich
 Ruth Norris
 Duke Ostendorf
 Pete Pumphrey
 Doug Ross
 Terry Gooch Ross
 Dr. Orrin Sage
 Tim Sanford
 Brian Stange
 Ann Wong

staff

- Karen Ferrell-Ingram, *Executive Director (January - April) and Conway Ranch Project Manager (May - December)*
 Kay Ogden, *Executive Director (May-December)*
 Aaron Johnson, *Lands Director*
 Serena Dennis, *Outreach Coordinator*
 Lesley Bruns, *Outreach and Development Director*
 Marguerite Burkham, *Membership and Communications Coordinator*
 Elise Robinette, *AmeriCorps Member/Education Coordinator*
 Ali Amberg, *AmeriCorps Member/Education Coordinator*
 Sara Kokkelenberg, *AmeriCorps Member/Education Coordinator*



land

to save the irreplaceable.

conservation & stewardship

The Eastern Sierra is rich in natural beauty and has a strong agricultural legacy. Wildlife habitat is abundant and diverse—supporting fisheries, migrating deer herds, and important bird flyways. The region’s working farms and ranches are scenic, historic, and a vital part of the region’s economy and rural character. Whether you live in the Eastern Sierra, have a second home here, or visit frequently—in person or in spirit—this magnificent region holds a special place in your heart.

Yet today the Eastern Sierra faces increased pressure to grow and develop in ways that threaten the very values that make the region so unique. Open spaces are vitally important, and they are disappearing quickly. Eastern Sierra Land Trust (ESLT) works to permanently safeguard this important region for both current and future generations. Through conservation partnerships with willing landowners, we help preserve the Eastern Sierra’s iconic lands for their scenic, agricultural, natural, recreational, historic, and watershed values.

ESLT is the only land trust focused on California’s Eastern Sierra. Because of our specialized skills and knowledge of the land’s resources, along with our extensive network of connections to agencies, legal experts, and funding sources, we are perfectly positioned to ensure the Eastern Sierra’s wild and working landscapes remain intact. As an accredited land trust, ESLT is nationally-recognized for meeting standards of excellence, upholding the public trust, and ensuring that conservation efforts are permanent.

A land trust can’t solve every problem, but when priorities and values align, great outcomes can result, benefitting both humans and wildlife alike. Since its creation in 2001, ESLT has succeeded in preserving over 7,500 acres of vital landscapes in the Eastern Sierra.



GREEN CREEK POWERHOUSE PRESERVE

As 2013 came to a close, ESLT completed its newest project: a historic 40-acre parcel along Green Creek in the hills south of Bridgeport, now named the Green Creek Powerhouse Preserve. Thanks to the enormous generosity of the David and Elva Sinai Foundation, donors of the property, this special place will now remain open space in perpetuity. This historically-unique property includes a length of Green Creek, as well as recreational access and vital habitat for birds and animals.

In an extended tradition of family charitable giving, John Sinai and his son, David Sinai, laid the cornerstone years ago for the David and Elva Sinai Foundation



Green Creek Powerhouse Preserve

to put into the public domain certain historic Mono County mining properties. With David’s death in 2006, the trustees of the Sinai Foundation donated the property to ESLT.

Protecting this important riparian corridor, its water resources, and the habitat it contains has long been a priority for ESLT. Entirely surrounded by public lands managed by the Bureau of Land Management, the landscape is home to a number of ecologically-significant native plants, and is dominated by aspen groves, Jeffrey and piñon pine woodlands, and sagebrush scrub. Various animals frequent the area, such as mule deer, black bear, and beaver, and it offers vital habitat to several notable bird species, including the northern goshawk and the Bi-State greater sage grouse.

In addition to the important wildlife habitat and recreational access this preserve offers, the parcel’s historic significance makes its preservation particularly meaningful. It’s the site of one of the earliest hydroelectric power plants in the United States, operating from 1893 until 1941, which supplied power to the stamp mill at the Bodie Mines. The thirteen miles of power lines were run completely straight because electricity was so poorly understood at the time that it was believed it would “jump off” the lines if the wires were curved!

As ESLT Lands Director Aaron Johnson put it, “The recreational and educational opportunities at this site are remarkable. With the completion of this project, we can ensure that the property’s important natural and historical qualities continue to be available to the public.”

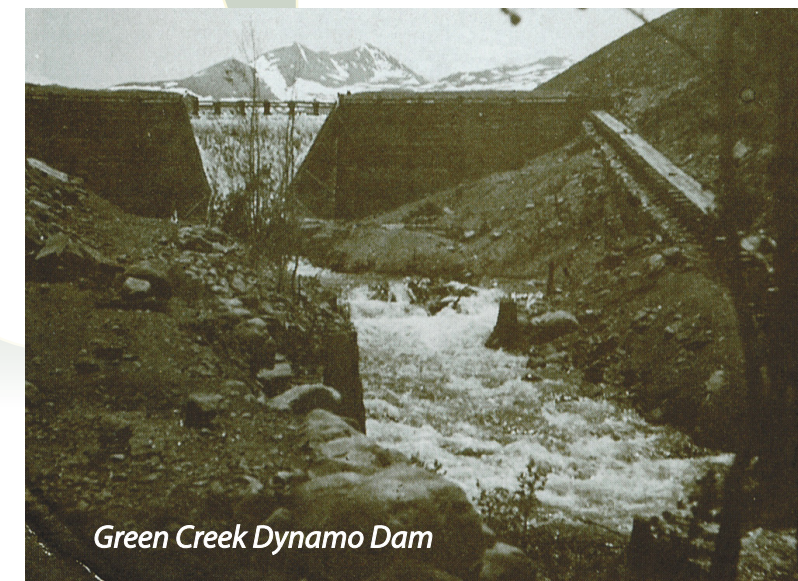
Funding in support of this project has been provided by the Sierra Nevada Conservancy, an agency of the State of California.



Green Creek Generator



Green Creek Power Plant



Green Creek Dynamo Dam

working farms & ranches

The Working Farms and Ranches Program helps ranchers and farmers sustain financially-viable agricultural operations on their land, against rising pressures to subdivide.

Landowners retain title and management of their property, while designating how it may be used, now and in the future. These efforts benefit our local economy and help maintain the iconic qualities of the Eastern Sierra's rural heritage.



Sinnamon Meadows

Summit and heading towards Mono Lake—the view you see is one of the most beloved vistas in the Eastern Sierra. Much of that spectacular open space is the combined 800-acre Conway & Mattly Ranches, containing an important wildlife migration corridor and critical spring and meadow habitats for birds and animals.

First homesteaded in 1872, Conway Ranch was the focus of an approved large-scale housing and resort development in the early 1990s. ESLT is working with Mono County to ensure the property's wildlife habitat, wetlands, and incredible scenic vistas are protected forever.

SINNAMON MEADOWS

In March 2013, the Sierra Nevada Conservancy (SNC) approved funding for one of our current land conservation projects known as Sinnamon Meadows, located in northern Mono County.

Almost entirely surrounded by public lands, this 1,240-acre property contains vital water

resources and high-altitude irrigated meadows. It is also home to two of our region's most iconic and rare species, the Bi-State population of greater sage grouse and the Sierra Nevada Bighorn Sheep.

ESLT is working to finalize a conservation agreement on Sinnamon Meadows and ensure its preservation in perpetuity.

CONWAY RANCH

Imagine driving south down Highway 395, dropping off Conway



Conway Ranch

critical habitats

land for wildlife

From mule deer to pollinators to the Inyo County star-tulip, our Critical Habitats Program maintains the viability of the region's wild inhabitants through public education and land protection agreements, ensuring that the wildlife of the Eastern Sierra are not crowded out of their traditional migration corridors, wetlands, and breeding grounds.



"Every time the Eastern Sierra Land Trust helps private landowners preserve their lands, wildlife benefits too."

-The Sage Grouse Initiative

SAGE GROUSE

The greater sage grouse is found at elevations ranging from 4,000 to over 9,000 feet. It is an omnivore, eating mainly sagebrush, other soft plants, and insects.

It is almost entirely reliant on sagebrush and cannot survive where the plant doesn't exist. In 2013, the U.S.

ESLT has been attending meetings with the Bi-State Local Area Working Group (LAWG), a dynamic team of ranchers, agency representatives, conservation organizations, and concerned citizens from California and Nevada. With the LAWG, we are working to build a foundation for the long-term protection of this unique species.

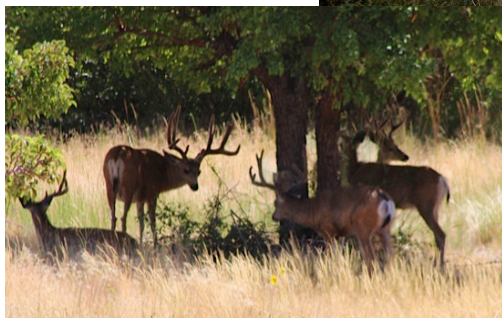
The Sage Grouse Initiative (SGI) is a partnership of ranchers, agencies, universities, non-profit groups, and businesses that embrace a common vision: wildlife conservation through sustainable ranching. On the home page of its website, SGI recognized ESLT in November 2013 as its first-ever "Featured Friend." We are proud of the honor and the fact that SGI views our work preserving land in the Eastern Sierra as one of the more notable recent success stories in efforts to save important sage grouse habitat.

Fish & Wildlife Service (USFWS) proposed that the Bi-State Population of Greater Sage Grouse—which lives exclusively in Eastern Sierra regions of California and Western Nevada—be categorized as threatened under the Endangered Species Act.

LAND STEWARDSHIP

While completing a conservation project—such as our recent Green Creek Powerhouse Preserve—can take years of hard work, once a property is protected, the job of the Land Trust has really only just begun. Every year, ESLT monitors each of our protected properties by making thorough inspections to ensure that the conservation values are being maintained.

As a part of our Stewardship Program, these annual monitoring visits are designed to document both natural and human-caused changes to the conservation values protected by each easement or agreement already in place. Our ongoing land stewardship efforts ensure that the scenic, agricultural, natural, recreational, historical, and watershed values preserved by our conservation agreements are protected in perpetuity.



AmeriCorps Member Elise Robinette collects information as part of ESLT's annual monitoring program.

community connections

sunflower garden project

Heading into its fifth year, the Sunflower Garden Project is a partnership between ESLT and Bishop Elementary School that engages third-grade students in gardening and connects them to the natural plant world through a hands-on experience.

Led by ESLT AmeriCorps member and Education Coordinator Elise Robinette, the students planted sunflower seeds and watched them grow. They visited the garden often to plant more seeds and monitor the growth cycle of their sunflowers while participating in fun and educational activities. They capped the project off with a Sunflower Garden Party in early June.



brown bag lunch series

ESLT's annual Brown Bag Lunch Series offers members of the Eastern Sierra community an opportunity to do something more during their lunch break. For each Brown Bag Lunch, ESLT invites speakers to engage attendees in their field of study and share experiences from their career. This free event is held in ESLT's garden from 12-1pm on the first Wednesday of every month between May and October.

In 2013, the Brown Bag Lunch Series theme was "Local Conservation Newsmakers." Prominent local speakers discussed the conservation value of their professional work, and topics ranged from the new Conservation Open Space Area on the Bishop Paiute Reservation, to climate change in the Eastern Sierra, to Archaeology in the Owens Valley.

gardenfest

Featuring local gardening organizations from the community, Gardenfest was a great way to welcome spring while providing the public with an educational and celebratory event.

Attendees at the May 16th event explored "Incredible Edibles" from Bishop Nursery, checked out native plants from the California



Native Plant Society, and got tips from the Inyo-Mono Master Gardeners.

They also learned about composting and tried samples of compost tea from "As The Worm Turns." Kids got to paint colorful flower pots donated by Bishop Nursery and explore our desert garden.

great sierra river cleanup

Now in its fifth year, the Great Sierra River Cleanup is the largest volunteer effort in California, working in partnership with the California Coastal Cleanup Day. ESLT hosted the Eastern Sierra cleanup on Saturday,



Elise, Sara and Ali's hard work was key to the success of ESLT's Community Connections Program in 2013.

ESLT AmeriCorps Members provide education and outreach.

ESLT was fortunate to host three AmeriCorps Members in 2013. Elise Robinette served a half-term partnership from April through September and Sara Kokkelenberg and Ali Amberg served year terms beginning in November 2013.

All three have focused on restoration projects, watershed education and outreach and volunteer organization. They helped expand ESLT's Community Connections program by introducing fun, educational activities that taught the importance of preserving our agricultural heritage, clean watersheds, and scenic spaces.



birds in the classroom

Birds in the Classroom is an educational event led and coordinated by ESLT's AmeriCorps members in collaboration with Eastern Sierra Audubon Society.

The goal is to take elementary school students from Edna Beaman Elementary School, a small rural school in Benton, CA, out onto preserved land, and to give them hands-on experience with birding and observing their local surroundings. It's a two-part program: an indoor classroom presentation followed by bird watching out at the ponds on our Benton Hot Springs conservation easement.



swall wildlife preserve planting day

In early October, ESLT staff and volunteers spent the day planting antelope bitterbrush at the Swall Wildlife Preserve. The Preserve is located right in the migration corridor and winter range of the Round Valley Mule Deer, and plays an important role in the herd's long-term survival. The two-year-old plants were donated by Karen Ferrell-Ingram.

Antelope bitterbrush is an evergreen shrub in the rose family. It is a key food source for the deer herd, which they rely on for nutrients during the harsh winter months. It provides significant quantities of calcium, phosphorus, fat, and crude protein.

When this native bitterbrush is cleared, invasive species—such as cheatgrass—can take over, choking out the important source of food the Round Valley Mule Deer has depended on for centuries. By taking action to prevent invasive species, such as cheatgrass, from gaining a foothold in this important habitat, and restoring the bitterbrush to the Round Valley Mule Deers small winter range, we have helped to greatly enhance their chances of survival.

September 21st in Bishop, in partnership with Cal Trout, the Sierra Nevada Conservancy and the Bishop Paiute Environmental Management Office. This event was an opportunity for the Eastern Sierra community to come together with families, neighbors, and friends to accomplish something vital and worthy on behalf of our beautiful Eastern Sierra.

and people connecting

lands & legacy

our legacy to the future.

During the weekend of August 2nd through 4th, ESLT hosted our annual fundraiser, Lands & Legacy. Festivities began Friday night with a private reception before the Mammoth Lakes Music Festival's final performance of the season, "Ciao Tutti." Stellar Brew provided delicious desserts to accompany wines donated by Sonoma Wine Company.

Saturday morning, we carpoled to one of ESLT's current conservation projects, Sinnamon Meadows. Nestled in the high grazing lands beneath Dunderberg Peak, Sinnamon Meadows provided breathtaking vistas over the course of our leisurely walk and picnic.

ESLT Lands Director Aaron Johnson and ESLT AmeriCorps Member Elise Robinette led a great tour at Sinnamon Meadows; they answered questions about this unique property, including an explanation of "lay down" fencing, big horn sheep issues, and sage grouse habitat protection.

The Benefit Dinner that night drew great support from our community. It was the perfect time to get to know new members and catch up with many longtime supporters. A delicious meal,

featuring regional ingredients, was provided especially for ESLT by Mammoth Mountain Executive Chef, Marc Mora. The

silent auction was a big hit, and brought some energetic bidding for a large array of fantastic prizes.

Following dinner, Mammoth Mountain CEO Rusty Gregory spoke about the importance of preserving lands in the face of increased pressures to develop. The evening's keynote speaker, Rand Wentworth, President of the Land Trust Alliance, provided a personal heartfelt reflection on the value of private land conservation, and the important work land trusts such as ESLT do, tracing its history all the way back to Thomas Jefferson.



Rand Wentworth was inspirational!



A member of the land tours looks out over the vast expanse of the Sinnamon Meadows Conservation Project.



The Sinnamon Meadows tour group stops for a photo.

lands & legacy

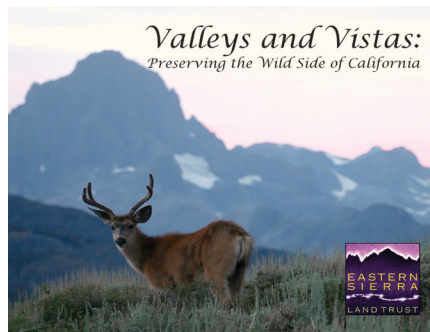
valleys and vistas

preserving the wild side of California

Valleys and Vistas, ESLT's new documentary film, premiered May 11th at the Mammoth Lakes Arts Center. It tells the story of ESLT's role in preserving the wild and working landscapes of the Eastern Sierra. Featuring stunning imagery, an explanation of the role we play as a land trust, and interviews with local farmers, ranchers, and ESLT staff, Valleys and Vistas illustrates our pride in our work and the invaluable support of our members.

The filmmakers, Ryan Christensen and Jonah Matthewson of Bristlecone Media, were in attendance and took part in a short question and answer session after the film's showing.

They are dedicated to promoting wilderness preservation by creating environmentally and socially



Photos courtesy Bristlecone Media.

conscious films exploring relevant issues of our time.

Bristlecone Media takes its name from the ancient trees that sit on the high ridges of the White Mountain range in Eastern California.

Ryan and Jonah are well known for their work on The Mono Lake Story. Made in 2011 in conjunction with the Mono Lake Committee, this film documents the legacy of Mono Lake and the miraculous turnaround it underwent in the late 20th century. This beautiful film earned seven different awards and nominations between 2012 and 2013, including Best Documentary Short at the 2012 Sedona International Film Festival.

To purchase a copy of the Valleys and Vistas DVD, call the ESLT office at 760.873.4554.

art for conservation

At our 5th annual Art for Conservation Show and Sale, ESLT offered Labor Day festival-goers in Mammoth Lakes a beautiful collection of artwork inspired by the Eastern Sierra. Our booth at Mono Council for the Arts' 44th Annual Labor Day Festival of the Arts and Music from August 31st through September 2nd, was filled

with the works of our 21 participating member-artists, who donated 50% of their sales to fund ESLT's mission to preserve vital lands.

With a generous loan by the Mammoth Lakes Foundation of a tent and art panels, we were able to exhibit a variety of works, from original oil and watercolor paintings to stunning photography, palladium prints, abstract art and an assortment of cards and calendars.

Our Arts Committee Team—Lynn Marit Peterson, Rick Kattelman, Bruce and Karen Licher, Lori Michelon, and Andy Selters—had a great time showing their artwork to the community while supporting ESLT. They each contributed significantly to the success of the weekend.

Art for Conservation would not be possible without the generosity of our contributing artists, their dedication to our mission, and their inspiring visions of the Eastern Sierra's natural beauty and indelible character.



Rock Creek Watercolor by Lynn Marit Peterson

members

Corporate & Foundation Supporters \$5,000 and over:

Edison International
The John Randolph Haynes and Dora Haynes Foundation
The Roger I. and Ruth B. MacFarlane Foundation
Mammoth Mountain Ski Area
Metabolic Studio
Pelago Corporation
Sierra Nevada Conservancy
U.S. Fish and Wildlife Service

Under \$5,000:

Adobe Valley, LLC
Black Gold Asphalt, Inc.
California Community Foundation
Centennial Livestock
Country Gardens/City Spaces
East Fork Partners, LLC
The G2 Gallery
Hanford Family Trust
KW Botanicals
L and M Limited Family Partnership
Mono Market/Chris Lizza
Praxis Associates, Inc.
Rose Foundation for Communities & the Environment
Santa Cruz Fly Fisherman
The Samuel Goldwyn Foundation
The Swimmer Family Trust

Stewardship Circle \$2,500 and over:

Scott and Lynda Adelson
Anonymous
Sharon and Malcolm Clark
Barbara Daugherty
Douglas and Martha Duncan
Rusty and Bonnie Gregory
Rick Kattelmann and Sally Gaines
Nancy Light and Chris Fichtel
Peter and Patricia Morris
Elaine and Doug Muchmore
Roger D. Reading
Tony and Sherryl Taylor
Derek Taylor
Sid and Betsey Tyler
C. Dana White

\$1,000 - \$2,499:

William H. and Susan M. Baribault
Robert and Karen Gardner
Martha Breed
Shannon and Pat Cahill
Regina Fink
Lynn and Nancy Higbee
Randy Keller and Mary Glenn
Margo Koss and LeRoy Russ

Lorraine E. Masten and Mike Loughman
Lee and Bob Naylor
Edmund and Jan Ostendorf
Paul and Katherine Page
Wayne Pfeiffer
Orrin and Cindy Sage
Roland Smith
Hank and Susan Stoutz
Robert and Kyra Waldron
Michael Weber and Frances Spivy-Weber

\$500 - \$999:

Paola Accusani
Luca and Alisa Adriani
Nona T. and R. Steve Barker
Penny and Jonathan Bourne
Bill Bramlette and Diane Henderson
Elisabeth Brown
Blake and Andrea Brown
Barrett and Diana Bryan
Nancy and Skip Burke
Marguerite Burkham and Josh Merritt
Cynthia Clamp and Maryann Zylstra
Karen Ferrell-Ingram and Stephen Ingram
Roger and Diane Getts
William and Nina Graham
Richard and Maria Grant
Karl and Laura Hinrichs
Gerald and Karen Hoefner
Janet and Stan Hunewill
Hollis Lenderking
Ethan and Joanne Lipsig
Colin Magowan and Elaine Kabala
Scott and Lisa McKenzie
Sam Mudie
Shawn and Debbie Mulcahey
Paul and Antje Newhagen
Ruth Norris and John Shores
Kay Ogden and Jeff Boone
Stacy Pulice
Donald and Joanne Sage
Fred and Wendy Salter
James Sanford and Jean Holden
Sarah C. Sheehan
John and Jeri Taylor
Alison M. Whalen and Steve Marenberg
Wilma and Bryce Wheeler

\$249 - \$499:
Hasnat Ahmed and Miriam Farzana Ahmed
Ingrid E. Akerblom
Jo Bacon
Tucker and Melody Barksdale

Dennis Barton
Michael and Judy Bornfeld
Galen and Judith Clifford
Stephen and Sharon Commins
Marian T. Cropp
Martha Davis
John Evarts and Marjorie Popper
Paul A. Grishaber
Rosanne and Thomas Higley
Michael Honer
Heidi Hopkins
Christina Kirkpatrick
Theodore Mazzone and Randall Wittorp
Elizabeth Olson
John and Peggy Overland
Marie Patrick and Michael Lofthus
Frederick Perner
Brynn and Galen Pewtherer
Michael and Lenore M. Roberts
John H. Robinson, Jr. and Harriet Greeff Robinson
Catherine M. Rose
Sheryl Saari
Dennis Sanders and Gail Allen
Jean Schuyler

Michael and Mary Shore
Graham Smith
Margaret Songster and Terry Oden
Bill and Sherry Taylor
Julie Yost
Don and OJ Zeleny

\$100 - \$249

Derrek C. Aaron
Debb Campbell
Karen Allen and Brian Cashore
Leslie and Rick Anderson
Cynthia Archer
John and Lynette Armstrong
Linda Arnold
Joseph and Marjorie Bailey
Mark Baker
Alan Barlow
Priscilla S. Battelle
Bradley and Judyth Beard
Clifford Beck, M.D. and Alice Casey, M.D.
Craig Behrens and Patricia Price
Robert Bender
Wayne Bennett
John Billesdon and Carole Newton Gordon
Tom and Sheri Bohigian
Susan and Steve Brandt
Michelle D. Brodie
Geraldine A. Brown
Robert Brown
Stacey Brown, M.D. and Ceal Klingler



On June 8th and 9th, ESLT hosted a member appreciation campout and guided walk at the Benton Hot Springs Ranch Conservation Easement to thank all our loyal supporters.

Saturday evening, Bill Bramlette, whose family has owned property in Benton since the 1920's, shared fascinating stories about Benton's history. Everyone enjoyed soaking in the idyllic hot tubs under a star-filled sky, singing along with local bluegrass band Idle Hands, and roasting s'mores around the campfire.

The following morning, members had the opportunity to explore ESLT's Benton Hot Springs Ranch Conservation Easement, just up

Benton Hot Springs Member Appreciation Campout

the road from the Hot Springs. Throughout the walk, novice and experienced birders alike kept their binoculars handy for up-close views of the many bird species that call the ponds home at this time of year.

Bill Bramlette explained the history and the boundaries of this easement, and local fish and wildlife expert Steve Parmenter shared details about the ongoing restoration project on this important property.



Simon Bruce and Liliana Uribe Bruce
Lesley Bruns
Penny and Paul Burdeno
Dale and Suzanne Burger
Scott and Frances Burkham
Jeanne and William Cahill
Brian Carkeet
Karin Carrington
Joan M. Carroll
Thomas J. and Judith E. Cerny
Robin Chandler
Eunice Childs
Cheryl Chipman and Garry Oye
Graham Chisholm
Brian and India Clamp
Joan E. Clamp
George and Shirley Coleman
Jack and Kathy Copeland
William C. Cox and Barbara Cameron
Roger Crist and Susan Korngold
John Cunningham and Evanne Jardine
Dale B. Dalrymple
Ana Danielson
Victoria Danzig
Jeff and Vicki Davis
Dan and Leslie Dawson
William and Bernadette DeYoung
Kirsten DiNicola
Kevin and Joanna Drury
Duaine and Barbara Duff
Bill Dunlap
S. Russell Edwards

Linda J. Ekback
Doug C. Erickson
William Faulkner
Jack Ferrell
Claude and Nancy Fiddler
Steve A. Filarsky and Barbara J. Ward
Morris and Mary Fiorina
Judy and Marshall Fisher
John and Patsy Fiske
Lynne M. Foster and Lyle Gaston
James Fousekis
Robert Frantz and Nancy Goldman
Ted and Kate Freeland
Heidi Fron
Sidney L. Gardner
William and Lance Geiger
Jane and Roy Gillam
Renee Golling
John and Rosamond Gorham
David Grah
John and Elizabeth Grether
Jeff Griffiths and Taema Weiss
Gerhard Hahne
Eugene and Julie Hallsted
Thomas and Nancy Hardy
Willi Hasle
Don Henderson and Alice Cahill-Henderson
Joanna Hofer
Sandy Hogan
Nicole Holland
Craig M. Holmes
Carolyn and Donald Honer

Tom and Julie Anne Hopkins
Bruce L. Horn
Otto and Diane Hub
Chris Hummel
Carol and John Ingram
Jane Ingram
Rosemary Jarrett
Cyd Jenefsky and Ralph Wolff
William H. Johnston
Mark and Melanie Jones
Andrew D. and Deena M. Kastor
John and Elizabeth Keating
Barbara Kelley and Derrick Vocolka
Bob Kent
Jane Kenyon
Jud and Jeanne King
Maurice A. King
Georgia Kinninger
Christopher and Lizabeth Klein
Gerald and Rosette Koch
Judith H. and Tony Kramer
John and Dee Lacey
Alvin and Susan Lapp
Mike B. Lary
Jim C. Lee
Donald E. Lewis
Matthew Loscalzo
Kathleen Lucich and Walt Matell
Penelope and Jay Lusche
Michael and Linda Lyon
Katie Maloney Bellomo
Peter Mann
Barbi and Bert Marcum

Warren Marr and Diane MacInnes
James and Roxane Mattinson
Robert and Charlene Mattos
Kevin and Elisabeth Mazzu
Neil and Ase McCarroll
Steve McLaughlin and Jan Bowers
Ernest and Lyn Messner
Carrie and Dan Meyers
Lori Michelon
Constance Millar and Jeffrey Wyneken
John and Marcia Moore
George and Frances Murakami
Hannah Murray and Nelson Sanchez
Pamela and Gregory Nelson
Ronald and Barbara Oriti
Stuart Otte
Blythe Ousterman
Robert and Jane Parker
James R. Parker
Gena Pennington
Barbara and Dennis Phillips
Merton F. Preston
Ralph K. Rea
Jane and David Richardson
Will Richmond
C.D. Ritter
James and Judy Robinson
Dan Rosser
Ronnie Saenz
Timothy B. Sanford
Warren Schacter
Lisa and Ted Schade
Marilies Schoepflin
Diane and Eric Schott
Mark and Lisa Schwartz
Paul and Elsa Shekelle
Ira and Ninette Shepnick
Neil Sherman
Victoria Simonds and Thomas Scharffenberger
Gerould H. Smith, Jr.
Tracy Stansfield
Jack and Jil Stark
John and Susan Stavlo
Faith and Piers Strailley
Fred Stump
Avon Swofford
Lillian Tallman
Daniel M. Tellep
Denis Trafecanty and Glenda Kimmerly
Chris Trafecanty and Irene Lozano
Trafecanty
Ron and Shelia Troupe
Charles and Jean Tucker
Martha Voght
Barbara Wagner
Kathryn and Dan Watson
Lawrence S. Westfall

Polly Wheaton
Gretchen Whisenand
David M. Wilborn
Dieter Wilken and Elizabeth Painter
James and Kay Wilson
Whitney and Clarkia Wilson
Katherine Wilson and Richard Byers
James Yurchenco and Amy Lauterbach
\$50-\$99
Christopher and Bonnie Allen
Barbara Z. Anderson
Gregory W. Bartha, M.D.
Herb and Phyllis Benham
Vernon Benhart and Linda R. Edwards
Edward Bennett
Alan and Marvis Best
Paul Bettelheim
Beatrice Beyer
Sandra Brockman
Gordon Brodfuehrer
Patricia Brown
Erik Bruce
Erica Chapin and Robin Roberts
Isan Chen
Bill and Carol Collins
Virginia Craik
Patricia E. and Jack Crowther
Lisa Cutting
J. Philip Dennis
Elaine Dodge
Ray Dutcher
Alexander Dychter
Leon and Robyn Dychter
Sam Dychter
Michelle Eaton
Margaret Eissler
Barry L. Evans
Jeanne Evenden
Anthony D. and Alexandria Q. Ferrari
Sharon Foster
Joseph Foyle
Darryl and Gina Franklin
Haley and Anita Fromholz
Adam and Ellen Gardner
Steven and Kathleen German
Martha S. Gilchrist
Allan and Nan Goodman
Michael Hammes
Jennifer B. and David C. Hansen
Darla Heil and Bob Harrington
Rob Hendrickson and Carola Ingram
James M. Hilton
Chris and Rhoda Holabird
Martin Hornick
Byng and Joanne Hunt

members

\$50-\$99 (continued)

Diane Jizba-Marion
Ellis and Deborah Jones
Richard Kawin
Charles Kohlhase
Jeff and Kelly Kudla
Wilbur Lew
Deborah Lewis and Peter Bradshaw
Karen and Bruce Licher
Kim Life
David and Suzanne Ligon
Kim, Wayne and Robin Linse
Jean Liu
Elin Ljung
Cori and L. Richard Lowe
Georgia Lowe
Kerry and George Lozito
Ueli Luthi and Robin Morning
Rebecca and David Lyons
Lynette W. and James D. Lythans
Bill Majeski
John T. Malloy
Carol Manifold
Julie Maxey-Allison
Sandra M. McLachlan
Geoff McQuilkin and Sarah Taylor
William Michael
Patricia Miller
Angela Moll
Susan Moore and Peter Woodman
Marvin and Mignon Moskowitz
Mike Nichols
Jeanne and Dennis Oakeshott
Michael and Lauren O'Malley
Steven G. and Lynn M. Peterson
Allan and Diana Pietrasanta
Anneke Raney
Linda H. Rausch and Charles J. Rausch, Jr.
Lynnette Royce
Jeffrey and Claire Rule
James Sammons
Dennis Sanders and Gail Allen
Vivian Sayward
Debie and Karl W. Schnadt
Z.C. and Richard L. Schoenbrun
Carmen and Jack Scull
H. Michael Shepard
Helmuth and Sigrid Spieler
Lynne E. Stark
Jeanette Stevens
Danna Stroud
Carole and George Summers
Shankar Sundaram
Clark and Paula Taylor
Nathan Taylor
Henry and Elizabeth Thumann

Howard and Marjorie Walker
Jeanne Walter
Brian Wegener
Stephen A. and Jennie Weiner
Peter and Anne Welty
Lee and Sue Whitmer
Noreen and Mark Wilbur
Sallie Williams Neubauer and Robert A. Neubauer
Chip Wood and Lee Ann Buchanan Wood
Carl and Donna Zeisse
Stephen D. Ziman and Susan Talke

\$49 and under

Michael Adams and Jeanne Falk Adams
Tyler Alves
Jennifer Anderson
Kathryn L. Anderson
Richard Knepp
Maurica O. Anderson
Jack and Jeanne Androvich
Douglas Anthony
Lindsay Barksdale and Ian Birrell
Leyna Bernstein
Lawrence and Ruth Blakely
Jerry Bornstein
Herley and Mollie Bowling
Cheryl and Jay Bretton
Michael and Cynthia Brody
Glenn and Janet Bruns
Gabriel Butterick
Campy and Ski Camphausen
Cathy Cannon and Bruce Tulloch
Ross Carkeet
Dave and Janet Carle
Stephen Carter and Terry Williams
Douglas W. Chadwick
Harry and Katherine Cheney
Paul and Celia Concus
Sharon Connor
Elaine R. Cook
Chris and Alexandra Defaria
Fred and Jacqueline Dennis
Lyn Dessaux
Michael F. Diggles
Jean Dillingham
Roger and Phyllis Duba
Andrew Dubrasky
Gillian and Scott Edel
David Edelson
Debbe and John Eilts
Raymond Elliott
Neil Elliott
Dana, Eric and Orion Ellis
Linda and Larry Emerson
Sean P. Farrell
Jurgen Felst

Priscilla Flynn
Karen Freeburg
Michael Freeman
Alan Garrett
Heidi Goodwin
Robert and Nadine Hall
Jan Hambleton and Curt Schweizer
Brian Hamilton
Victoria Hamilton
James Harnagel
Marilyn Hayden
Charles Hench
Richard and Joanne Hihn
William B. Hull
David Humes
Lisa Isaacs
Gary L. and Ilene Katz
Wayne and Penny Kehus
Phill and Brenda Kiddoo
Barb L. Klosterman
Richard Knepp
Penelope M. Koines
Ralph G. and Kelly S. Langley
James and Ann Leithliter
Scott Mainwaring
Mary Lynn and Mike Mallen
Sara J. Manning and Daniel Pritchett
Paul J. Marin
Dave and Connie Marquart
Ross and Natalie Mather
David Mattes
Ralph and Deborah McLeran
Kim and Curtis Milliron
Leigh and Carol Mintz
William and Vivian Mitchel
Mark Monn
Tom and Barbara Moody
Tom, Pat and Katherine Morgan
Rollin and Anne Morrison
James and Laurie Morrow
Phyllis Mottola
Eric and Sherry Noble
Christopher O'Donnell
Mary B. Ogilvie and Susan M. Straghalis
Susanne Olson
Carl and Helen Ondry
Michael and Laura Parker
Steven and Leigh Parmenter
Janese Patterson
Gary Patton
Marilyn and Robert Paull
Ralph Penfield
Duane Petite
Mary Pipersky and Susan Burgett
Karl S. Pister

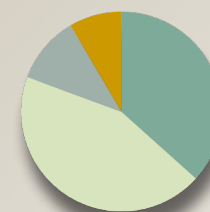
Joe and Laurel Profita
Rick Pucci
Pete Pumphrey and Roberta Lagomarsini
Denyse Racine and Mark Daniel
Janet and Russ Reese
Dr. Marc D. and Kathryn Reynolds
Barbara and Mont Richardson
Matthew Robertson
Gregory and Linda Rose
Lisa Sapak
Frost Saufley
Stephen Saurenman
John Schelhas
Allen Schneider
Allan Schoenherr
René M. Scribe
Sylvia Sherman
Thomas and Barbara Sherman
David Shuford
Heidi Sickler
Diane Sipe
Jon Sirkis
Sara Steck
Charles and Phyllis Stender
Emilie Strauss
Sam and Susan Sutton
Joshua Switzky
Sylvia Sykora and Robert Meyers
Howard and Gloria Tapia
Elizabeth and Jim Tenney
Georgette Theotig
Susan Thomson
Robert Todd
Hernando Torres
Nancy Upham and John Louth
Ramon Valdez
Gloria and Jeff Vaughan
Jennifer Venneman
Thomas and Valerie Walczak
Alan and Karen Waldvogel
Stephen and Judy Walker
Helen and Jim Warren
Janet Westbrook
Doris T. White
Bruce L. Whitney
Judy and Andrew Wickman
David Woody
Wally Woolfenden
Julie, Gary and Piper Wright
Ann Zack

In-Kind Donations

A special thank you to all those individuals and organizations who supported ESLT through their In-Kind donations in 2013.

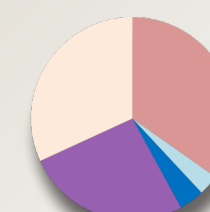
financial summary

Unrestricted Revenue	2012	2013
Contribution (Individual, corporate, and foundation)	\$217,296	\$198,600
Investment Interest and Gains (loss)	\$5,763	\$18,859
Program Services/Events	\$25,391	\$22,897
Funds Released from Restriction (Including land and easement acquisition grants)	\$130,490	\$149,087
Donated Land		\$182,001
Revenue Total	\$378,940	\$571,444
Expenses	2012	2013
Program Services (Land conservation and education)	\$265,460	\$136,138
Land & Easement Acquisition	\$11,716	\$163,293
Fundraising	\$24,718	\$40,482
Administration	\$28,204	\$31,356
Expense Total	\$330,099	\$371,269



2013 Expenses

- Program Services
- Land & Easement Acquisitions
- Fundraising
- Administration



2013 Revenue

- Contributions
- Investment
- Program Services
- Funds Released from Restriction
- Donated Land

Independent Accountants: Gilbert Associates, Inc.

special thanks . . . to our conservation partners

Roger I. and Ruth B.
**MACFARLANE
FOUNDATION**



METABOLIC STUDIO



The John Randolph Haynes and Dora
**HAYNES
FOUNDATION**

PHOTO CREDITS

Our sincere thanks to Tanya Gettelman, Heidi Goodwin, Stephen Ingram, Lee Naylor and ESLT staff members for providing the pictures included in the 2013 Annual Report.



If you want to help us preserve vital wild places in the Eastern Sierra for future generations, please contact us at: info@eslt.org or through our website at www.eslt.org.

land

because it's home.



P.O. Box 755
176 Home Street
Bishop, California 93515

Phone (760) 873-4554
Fax (760) 873-9277
www.eslt.org



Follow us on Facebook.